

Type	Self-Propelled Jack-Up Barge
Flag	Panama
Classification	ABS ✕A1, Self-Elevating Unit, ✕AMS-NP, CRC, UWILD, CPS
Function	Accommodation and Work Platform for Offshore Oil & Gas Services

Principal Dimensions

Hull Length (Overall):	68.7m
Hull Length (Main Deck):	51.6m
Hull Breadth:	31.2m
Hull Depth:	4.8m
Hull draft:	2.7m

Lifting Equipment

Main Crane (Leg Round)	
Capacity:	100ton@13m/2ton@36m
Boom Length:	36m
Aux. Deck Crane	
Capacity:	20ton@25m/2ton@30m
Boom Length:	30m

Legs

Number of Legs:	4
Type of Legs:	Circular
Footing Areas:	~35m ²
Leg Length max (incl. Footing):	68m
Working Water Depth:	3.7m to 45m

Accommodation

Total POB:	150p
Four (4) Men Cabins:	21
Two (2) Men Cabins:	26
Single Cabins (with office space):	14
<i>* All Cabins fitted with Wet unit</i>	

Power and Propulsion System

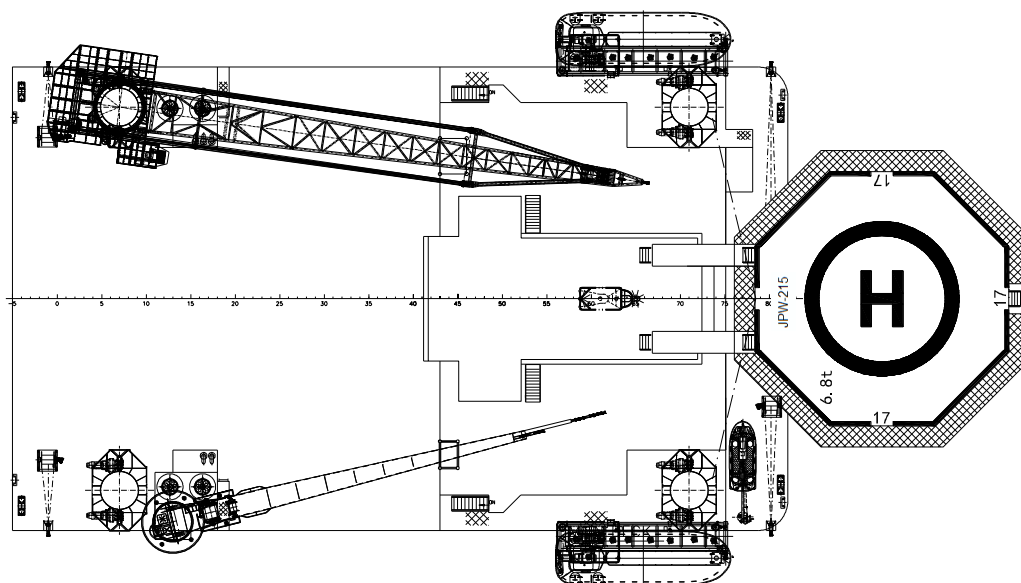
Main Generator Sets:	4 x 800kW
Emergency Generator Set:	1 x 200kW
Stern Azimuth Thruster:	2 x 900kW
Bow Thruster:	1 x 550kW

* Stern Azimuth Thrusters are VFD driven

Freezer and Chiller	91m ³
Separate Junior & Senior Mess Room	1 each
Separate Junior & Senior Coffee Room	1 each
Cinema, GYM, Smoking Room	1 each
Laundry Room, Change Room, Shower Room	1 each
Meeting Room, Helicopter Lounge	1 each
Offices	10
Deck Workshop, store	3
Hospital	1
Quiet Room	3

Speed

Transit Speed (Calm Sea)	6kn
--------------------------	-----



Variable Load

Variable Load (Elevated): abt. 700t

Cargo Deck

Clear Deck Area: ex. 600m²
Main Deck Load: 3-6t/m²

Tank Capacities

Fuel Oil: abt. 336m³
Fresh Water: abt. 280m³
Brine: abt. 158m³
Drill Water: abt. 146m³

Jacking System

Type: VFD driven, Rack & Pinion
Jacking Capacity: 880t/leg
Holding Capacity: 1488t/leg
Jacking Speed: 0.9m/min (hull)
1.2m/min (leg)
Jetting system: Fitted

Aux. Machinery

Mooring Winches: 4 x 100kN
Water Maker: 2 x 40m³/day
Central A/C: Based on +50°C, 70% RH, 30% RA
Submersible Hose Reels: 2
Oily Water Separator: 1
Sewage Treatment Plant: 1
Fuel Oil Purifier: 2

Safety Equipment

Fire & Gas Detection and Fire-fighting Systems meeting MODU and SOLAS Requirements
Lifeboats: 2x 150men
Liferafts: 6 x 25men

Helideck

Helicopter Type: BELL212 /BELL412EP/AW139
* CAP 437 Compliant

Communication Equipment

GMDSS, VHF DSC, MF/HF SSB, MF/HF DSC, EPIRB, SART, Navtex, Portable VHF, Inmarsat-F, V-SAT

Navigation Equipment

Radar(2), Gyro Compass, Magnetic Compass, DGPS, Echo Sounder, Speed Log, AIS, VDR, Anemometer

Design Condition

	Normal Operation	Storm Survival	
		Arabian Gulf	ABS
Water Depth	45.0m	30.0m	30.0m
Air Gap	7.0m	7.0m	7.0m
Wave Height	5.5m	8.0m	5.5m
Surface Current	0.7m/s	1.0m/s	0.7m/s
Wind Speed	70 knots	70 knots	100 knots
Variable Load	700T	700T	700T